

Thank you for participating in the 2022/2023 Merrimack Valley Quilters Guild Mystery Quilt Project. Welcome to month #6. The name of this quilt is Magnolia Mystery by Meadow Mist Designs. This is the final set of instructions. Enjoy 😊

### Background Blocks and Setting Triangles

The Magnolia Mystery Quilt is assembled on-point. Below are listed the exact measurements for the setting triangles. I prefer to add a full inch to these measurements for my setting triangles then trim to size after the quilt top is sewn together. If you would like to increase the size of your setting triangles, add about one inch to the measurements with a \*.

#### LAP SIZE - CUTTING REMAINING FABRIC D

Note: if your fabric is at least 42 ½", then you only need to cut 1 strip of 21 ⅛" x WOF and 3 strips of 14" x WOF.

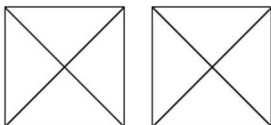
1. Cut 2 strips\* 21 ⅛" x WOF. (setting triangles)
  - a. Sub-cut 2 squares\* 21 ⅛" x 21 ⅛".
2. Cut 4 strips 14" x WOF. (border)

#### QUEEN SIZE - CUTTING REMAINING FABRIC D

1. Cut 2 strips\* 31" x WOF. (setting triangles)
  - a. Sub-cut 2 squares\* 31" x 31".
2. Cut 5 strips 18" x WOF. (border)
  - a. Sub-cut 1 strip into 2 half-strips 18" x 20".
  - b. Reserve the remaining 4 strips.

#### SETTING TRIANGLES

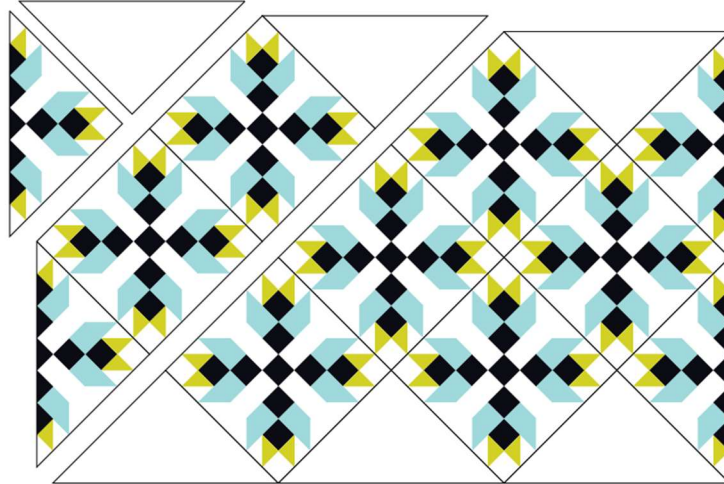
Cut the squares 21 ⅛" x 21 ⅛" (**lap**), OR 31" x 31" (**queen**) in half twice on the diagonal to form 6 setting triangles (you will have 2 extra triangles).



#### Quilt Top Assembly

Arrange the blocks as listed and shown below. Sew blocks into diagonal rows then sew rows together, pressing all seams open. The quilt top should measure approx. 60" x 40" (**lap**), 89 ½" x 60" (**queen**).

7 full magnolia block  
4 partial magnolia blocks  
6 side setting triangles



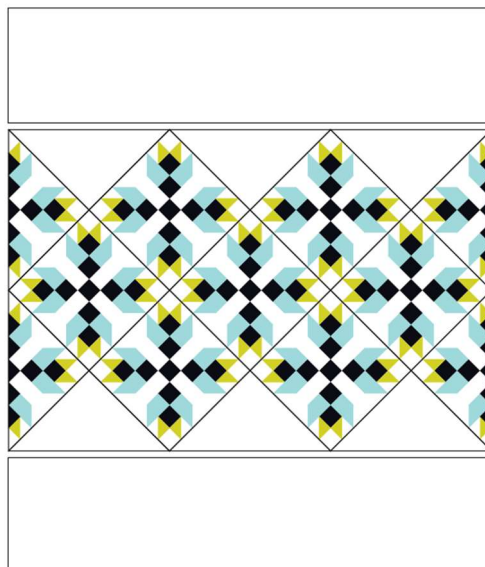
## Borders

### LAP SIZE

1. Sew 2 fabric D strips 14" x WOF together end-to-end. Repeat to make a total of 2 pieced top/bottom strips. Note: if your fabric was at least 42 1/2" wide and you cut 3 strips, then cut one of the strips in half and sew 1 full and 1 half strip together end to end. Repeat to make a total of 2 pieced top/bottom strips.
2. Measure the average width of the quilt top and trim the 2 pieced top/bottom strips to fit (approx. 60"). Attach the borders to the top and bottom of the quilt top.

### QUEEN SIZE

1. Sew 2 fabric D strips 18" x WOF and 1 fabric D strip 18" x 20" together end-to-end. Repeat to make a total of 2 pieced top/bottom strips.
2. Measure the average width of the quilt top and trim the 2 pieced top/bottom strips to fit (approx. 89 1/2"). Attach the borders to the top and bottom of the quilt top.



## Finishing

Make backing, quilt, bind and enjoy!

	Lap	Queen
Binding	$\frac{5}{8}$ yd	$\frac{7}{8}$ yd
Backing	3 $\frac{7}{8}$ yards	8 $\frac{1}{4}$ yards
Batting	68" x 75"	98" x 103"

MAGNOLIA MYSTERY QUILT © 2017 Meadow Mist Designs

[www.MeadowMistDesigns.blogspot.com](http://www.MeadowMistDesigns.blogspot.com)

Share Your Quilt - You can share your in-progress and finished pictures of your mystery quilt on the Meadow Mist Designs Facebook group: [www.facebook.com/groups/1583320305263906/](http://www.facebook.com/groups/1583320305263906/) and on Instagram and other social media using #MagnoliaMysteryQuilt. and #MeadowMistDesigns